

Beam Clamps

Beam clamps presented in this section are designed to provide attachment of hanger rods to structural steel without drilling or welding. Various types of beam clamps and sizes are available for numerous applications.

Materials: Carbon Steel, Malleable Iron and Forged Steel are used in the manufacturing of beam clamps. Other materials are also available.

Finishes: Finishes for beam clamps in this section are Plain Steel, Electro-Plated Zinc, Hot Dipped Galvanized, Red Primer, Plastic Coating, Stainless Steel and other special coatings are also available.

Notes: See MSS SP-69 for recommended setscrew torque. Products in this section are designed and manufactured in accordance with industry standards. RHK is not responsible for injuries and damage which could result from improper and negligent installation of the items.

Beam Clamp - K303-K309

Material: Steel

Standard Finish: Electro-Plated or Hot-Dip Galvanized

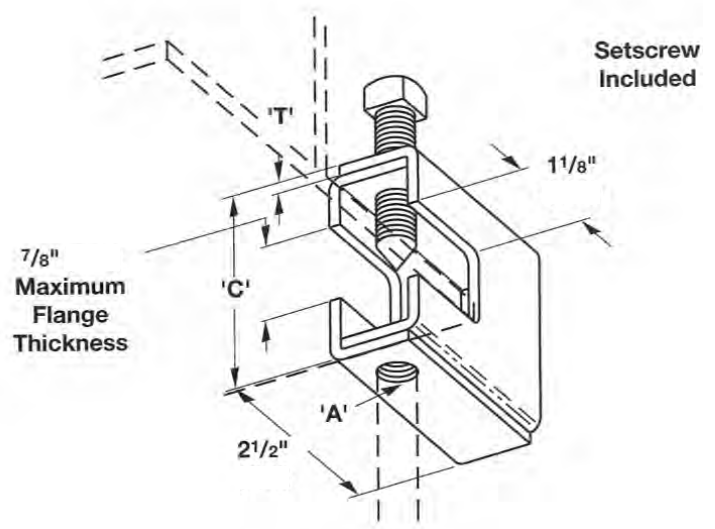
Service: Designed for attaching a hanger rod to the flange of a beam

Ordering: Specify part number and finish. When Retaining Strap is required, order K312 separately.

Recommended Setscrew Torque:

3/8"-16 = 150 in-Lbs.

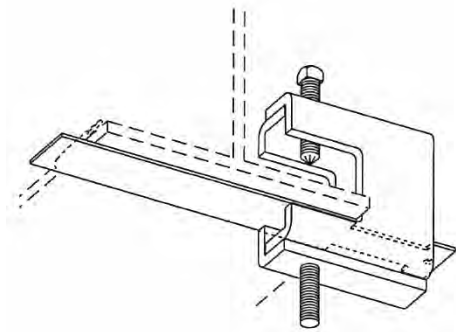
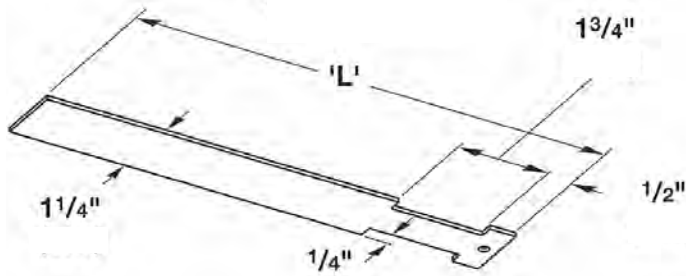
1/2"-13 = 350 in-Lbs.



Part Number	Rod Size "A"	Setscrew Size	"C"	"T"	Design Load (Lbs.)	Wt./C (Lbs.)
K303	1/4" - 20	3/8" - 16	2 5/16"	11 Ga.	400	72
K304	5/16" - 18	3/8" - 16	2 5/16"	11 Ga.	600	72
K305	3/8" - 16	3/8" - 16	2 5/16"	11 Ga.	600	72
K306	3/8" - 16	1/2" - 13	2 7/16"	7 Ga.	1100	97
K307	1/2" - 13	1/2" - 13	2 7/16"	7 Ga.	1100	97
K308	1/2" - 13	1/2" - 13	2 9/16"	1/4"	1500	133
K309	5/8" - 11	1/2" - 13	2 9/16"	1/4"	1500	133



Retaining Straps - K312



Material: Steel

Standard Finish: Pre-Galvanized

Service: Designed for use with K303-K309 and K321 beam clamps

Ordering: Specify part number and finish

Part Number	For Flange with	"L"	Wt./C (Lbs.)
K312 - 6	6"	9"	22
K312 - 9	9"	12"	30
K312 - 12	12"	15"	40
K312 - 15	15"	18"	49

Notes: Maximum beam thickness 3/4". For thicker beams step up one flange width size. Requires field forming on beam



Series Beam Clamps - K321

Material: Steel

Standard Finish: Electro-Plated or Hot-Dipped Galvanized

Service: Designed for attaching a hanger rod to the flange of a beam

Ordering: Specify part number and finish. When Retaining Strap is required, order K312 separately

Recommended Setscrew Torque:

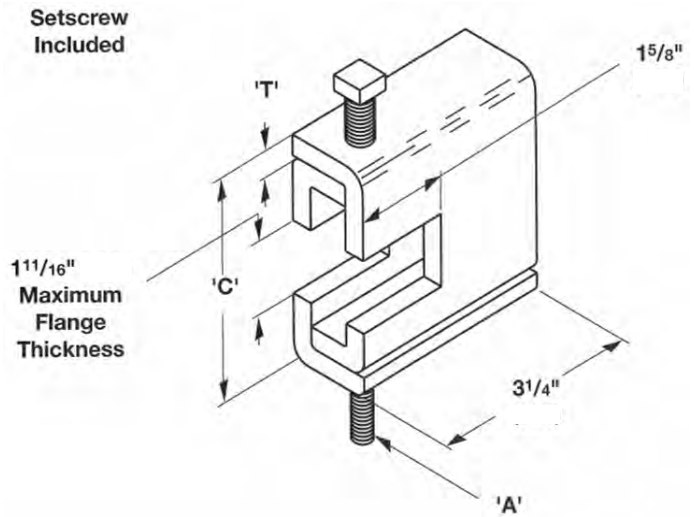
1/2"-13 = 350 in-Lbs.

5/8"-11 = 700 in-Lbs.

Minimum Flange Thickness:

For K321-1 thru K321-3 = 3/8"

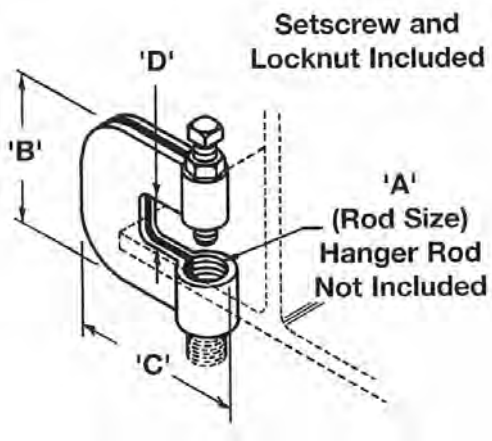
For K321-4 and K321-5 = 5/8"



Part Number	Rod Size "A"	Setscrew Size	"C"	"T"	Design Load (Lbs.)	Wt./C (Lbs.)
K321 - 1	3/8" - 16	1/2" - 13	3 9/16"	1/4"	1300	187
K321 - 2	1/2" - 13	1/2" - 13	3 9/16"	1/4"	1400	186
K321 - 3	5/8" - 11	1/2" - 13	3 9/16"	1/4"	1600	185
K321 - 4	5/8" - 11	5/8" - 11	3 23/32"	5/16"	1800	239
K321 - 5	3/4" - 10	5/8" - 11	3 23/32"	5/16"	2000	238



Steel C-Clamp w/ Locknut - K351L



Material: Steel (Stainless Steel available for 3/8" thru 5/8" rod sizes)
Standard Finish: Plain or Electro-Plated
Service: Designed for attaching hanger rod to the flange of a beam
Ordering: Specify part number and finish. When Retaining Strap is required, order K3362 thru K3365 separately

Part Number	Rod Size "A"	"B"	"C"	"D"	Design Load (Lbs.)	Maximum Iron Pipe Size Per UL	Wt./C (Lbs.)
K351L - 3/8	3/8" - 16	2 3/8"	2 3/8"	3/4"	300	4"	41
K351L - 1/2	1/2" - 13	2 3/8"	2 3/8"	3/4"	380	4"	41
K351L - 5/8	5/8" - 11	2 3/8"	2 1/4"	3/4"	550	6"	60
K351L - 3/4	3/4" - 10	2 3/8"	2 1/4"	3/4"	630	6"	71
K351L - 7/8	7/8" - 9	3"	3 1/4"	1"	1200	-	184



Wide Jaw Top Beam Clamp - K3033

Material: Ductile Iron

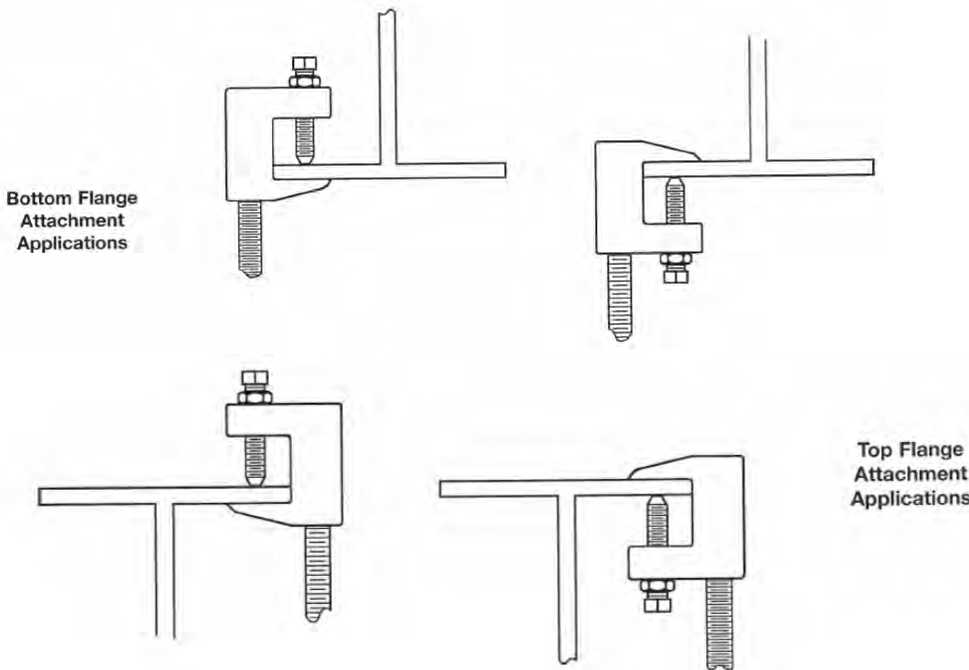
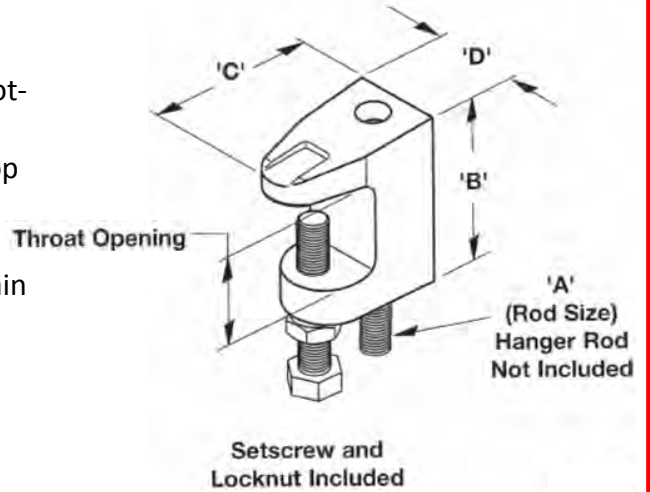
Standard Finish: Plain or Electro-Plated screw with Hot-Dipped Galvanized clamp

Service: Designed for attaching a hanger rod to the top or bottom flange of a bar joist or other structural shapes

Ordering: Specify part number and finish. When Retain Strap is required, order K3367 separately

Throat Opening:

- 1 1/4" for K3033-3/8 & 1/2
- 1 5/16" for K3033-5/8 & 3/4



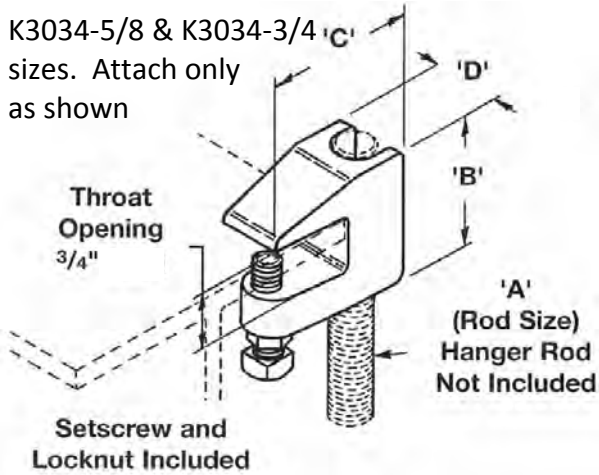
Part Number	Rod Size "A"	"B"	"C"	"D"	Design Load (Lbs.)	Maximum Iron Pipe Size Per UL	Wt./C (Lbs.)
K3033 - 3/8	3/8" - 16	2 1/4"	2"	1 1/8"	500	4"	54
K3033 - 1/2	1/2" - 13	2 5/16"	2 3/16"	1 1/4"	810	8"	51
K3033 - 5/8	5/8" - 11	2 5/8"	2 1/2"	1 3/8"	1000	8"	70
K3033 - 3/4	3/4" - 10	2 11/16"	2 1/2"	1 7/16"	1400	10"	98

Note: Installation of C-Clamp other than shown on this page is not recommended

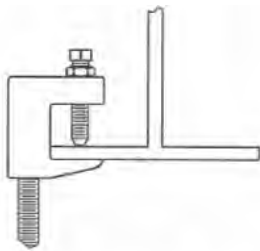
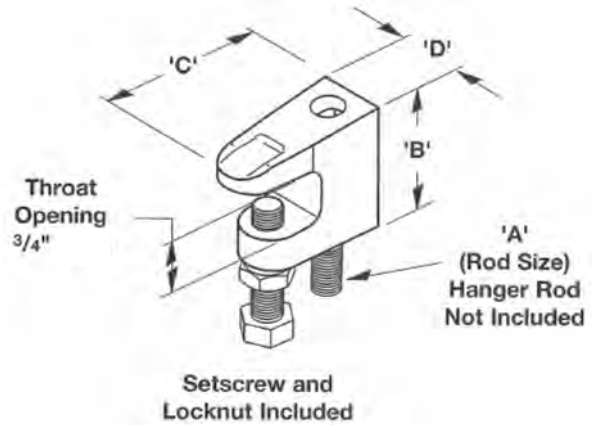


Top Beam Jr - K3034

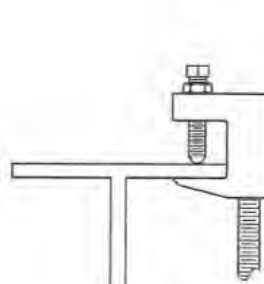
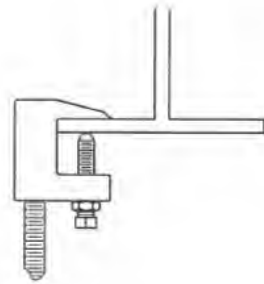
K3034-5/8 & K3034-3/4 sizes. Attach only as shown



K3034-3/8 & K3034-1/2 sizes. Attach only as shown



Bottom Flange Attachment Applications



Top Flange Attachment Applications

Material: Ductile Iron for 3/8" and 1/2" sizes; Malleable Iron for 5/8" and 3/4" sizes

Standard Finish: Plain or Electro-Plated

Service: Designed for attaching a hanger rod to the top or bottom flange (for their respective sizes) of a bar joist or other structural shapes

Ordering: Specify part number and finish. When Retaining Strap is required, order K3367 separately

Part Number	Rod Size "A"	"B"	"C"	"D"	Design Load (Lbs.)	Maximum Iron Pipe Size Per UL	Wt./C (Lbs.)
K3034 - 3/8	3/8" - 16	1 5/8"	2"	7/8"	560	4"	30
K3034 - 1/2	1/2" - 13	1 13/16"	2 3/16"	1 3/16"	810	8"	47
K3034 - 5/8	5/8" - 11	1 3/4"	2 1/8"	1 1/4"	1000	-	58
K3034 - 3/4	3/4" - 10	2"	2 1/4"	1 1/4"	1500	-	77

Note: Installation of C-Clamp other than shown on this page is not recommended



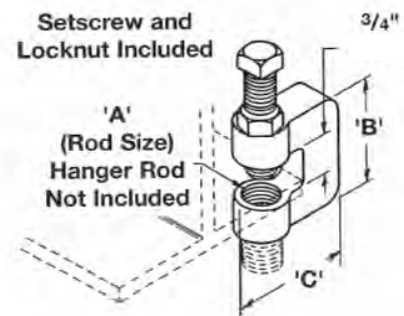
Malleable Iron C-Clamp w/ Locknut - K3036L

Material: Malleable Iron

Standard Finish: Plain or Electro-Plated

Service: Designed for attaching a hanger rod to the flange of a beam

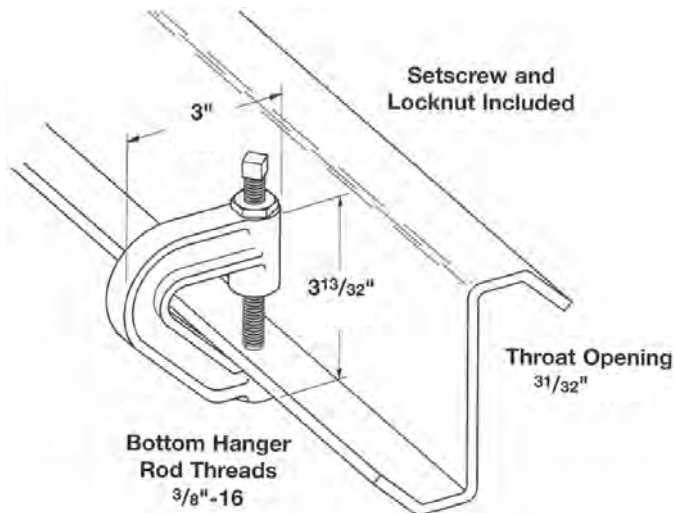
Ordering: Specify part number and finish. When Retaining Strap is required, order K3362 thru K3365 separately



Part Number	Rod Size "A"	"B"	"C"	Design Load (Lbs.)	Maximum Iron Pipe Size Per UL	Wt./C (Lbs.)
K3036L - 3/8	3/8" - 16	1 3/4"	1 3/4"	300	4"	41
K3036L - 1/2	1/2" - 13	1 3/4"	1 3/4"	380	5"	41
K3036L - 5/8	5/8" - 11	2"	1 7/8"	530	6"	60
K3036L - 3/4	3/4" - 10	2"	2"	530	6"	71

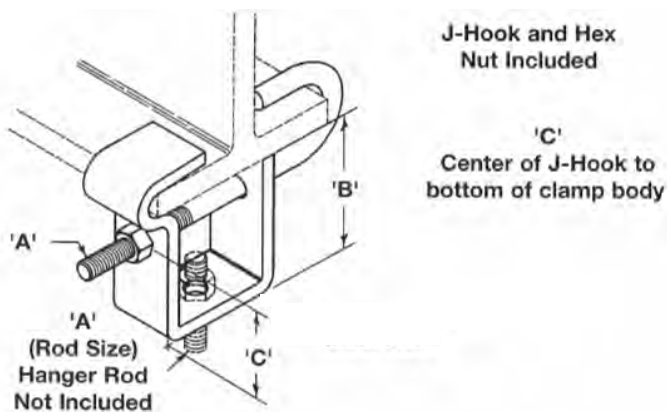


Z-Purlin Malleable C-Clamp - K3037



Material: Malleable Iron
Standard Finish: Plain or Electro-Plated
Service: Designed for attaching a 3/8\"-16 hanger rod to the bottom flange of a Z-Purlin
Ordering: Specify part number and finish
Weight: Wt./C 90 Lbs.
Design Load: 400 Lbs.

Adjustable Beam Clamp - K3040



Material: Steel
Standard Finish: Plain or Electro-Plated
Service: Designed for attaching rod under a beam flange. Adjustable for 4\" to 8\" flange widths. Maximum flange thickness 3/4\"
Ordering: Specify part number and finish

Part Number	Rod Size "A"	"B"	"C"	Design Load (Lbs.)	Wt./C (Lbs.)
K3040 - 3/8	3/8" - 16	2 3/4"	1 13/16"	300	120
K3040 - 1/2	1/2" - 13	2 3/4"	1 3/4"	700	160
K3040 - 5/8	5/8" - 11	3"	1 3/4"	1000	216
K3040 - 3/4	3/4" - 10	3 3/8"	1 7/8"	1800	442



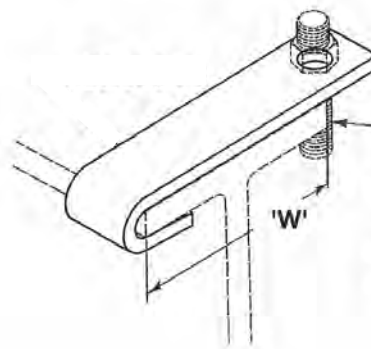
Top Beam Hook - K3042

Material: Steel

Standard Finish: Plain or Electro-Plated

Service: Designed for attaching hanger rod to the top flange of a beam

Ordering: Specify part number, flange width, flange thickness and finish



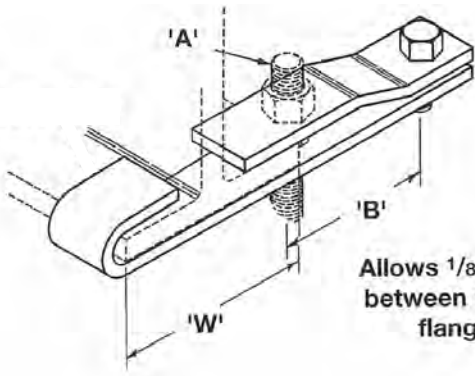
'A'
(Rod Size)
Hanger Rod
Not Included

Allows 1/8" clearance
between hanger rod and
flange of beam.

Part Number	"A"	For Nominal Pipe Size	Design Load (Lbs.)	Approximate Wt./C (Lbs.) for Width of Beam Flange "W"			
				4"	6"	8"	12"
K3042 - 3/8	3/8" - 16	3/4" to 2"	300	47	62	72	108
K3042 - 1/2	1/2" - 13	2 1/2" to 3 1/2"	500	65	86	105	146



Side Beam Clamp - K3045



Bolt and Nut Included

'A' (Rod Size)
Hanger Rod Not Included

Allows 1/8" clearance
between hanger rod and
flange of beam

Material: Steel

Standard Finish: Plain or Electro-Plated

Service: Designed for attaching hanger rod to the side of a beam flange. Works on top or bottom of beam

Ordering: Specify part number, flange width and finish

Part Number	"A"	For Nominal Pipe Size	"B"	Design Load (Lbs.)
K3045 - 3/8	3/8" - 16	3/4" to 2"	3 1/8"	300
K3045 - 1/2	1/2" - 13	2 1/2" to 3 1/2"	3 1/8"	500
K3045 - 5/8	5/8" - 11	4" to 5"	3 1/8"	700

Flange Width "W"	Flange Thickness Minimum	Flange Thickness Maximum	Wt./C for Side Beam Clamp Size (Lbs.)				
			K3045 - 3/8	K3045 - 1/2	K3045 - 5/8	K3045 - 3/4	K3045 - 7/8
3"	1/4"	3/8"	92	125	245	322	576
4"	3/16"	1/2"	100	141	267	353	618
5"	5/16"	5/8"	110	152	289	385	675
6"	1/4"	3/4"	119	164	309	412	718
7"	7/16"	7/8"	128	175	327	443	742
8"	7/16"	7/8"	134	182	345	462	798
9"	9/16"	1"	143	198	368	491	848



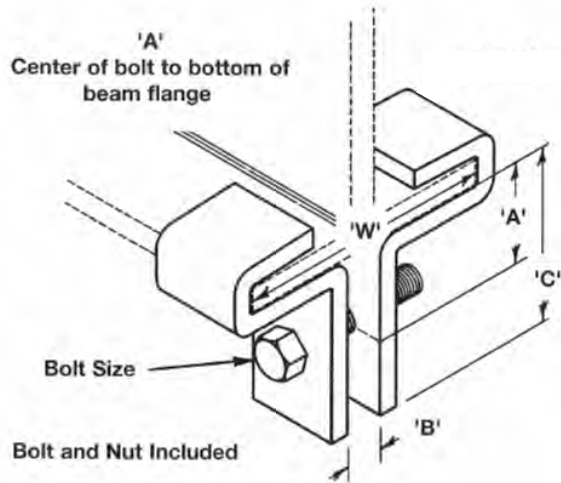
Steel Beam Clamp - K3050

Material: Steel

Standard Finish: Plain or Electro-Plated

Service: Designed for attaching hanger rods centered under beam flanges. Recommended to use with K3200 series up to size 1 1/2"

Ordering: Specify part number, flange width and finish

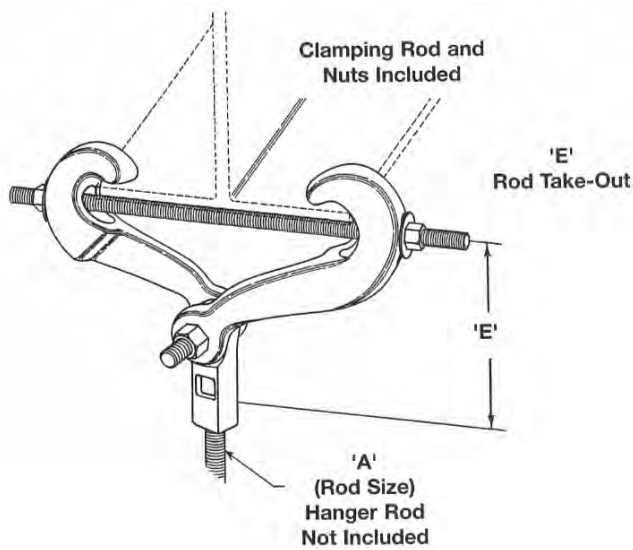


Part Number and Size	Bolt Size	"A"	"B" Minimum	"C"	Design Load (Lbs.)
K3050 - 2	1/2" - 13	1 3/8"	5/8"	2 1/8"	1000
K3050 - 5	3/4" - 10	1 7/8"	7/8"	3"	3000

Flange Width "W"	Flange Thickness Minimum	Flange Thickness Maximum	Wt./C for Beam Clamp Size 2 (Lbs.)	Wt./C for Beam Clamp Size 5 (Lbs.)
4"	3/16"	1/2"	116	429
5"	5/16"	5/8"	125	458
6"	1/4"	3/4"	134	486
7"	7/16"	7/8"	143	514
8"	7/16"	7/8"	152	543
9"	9/16"	1"	160	571
10"	5/8"	1"	169	599
12"	5/8"	1 1/4"	187	656



Malleable Iron Ice Tong Beam Clamp - K3054



Material: Malleable Iron

Standard Finish: Plain or Electro-Plated

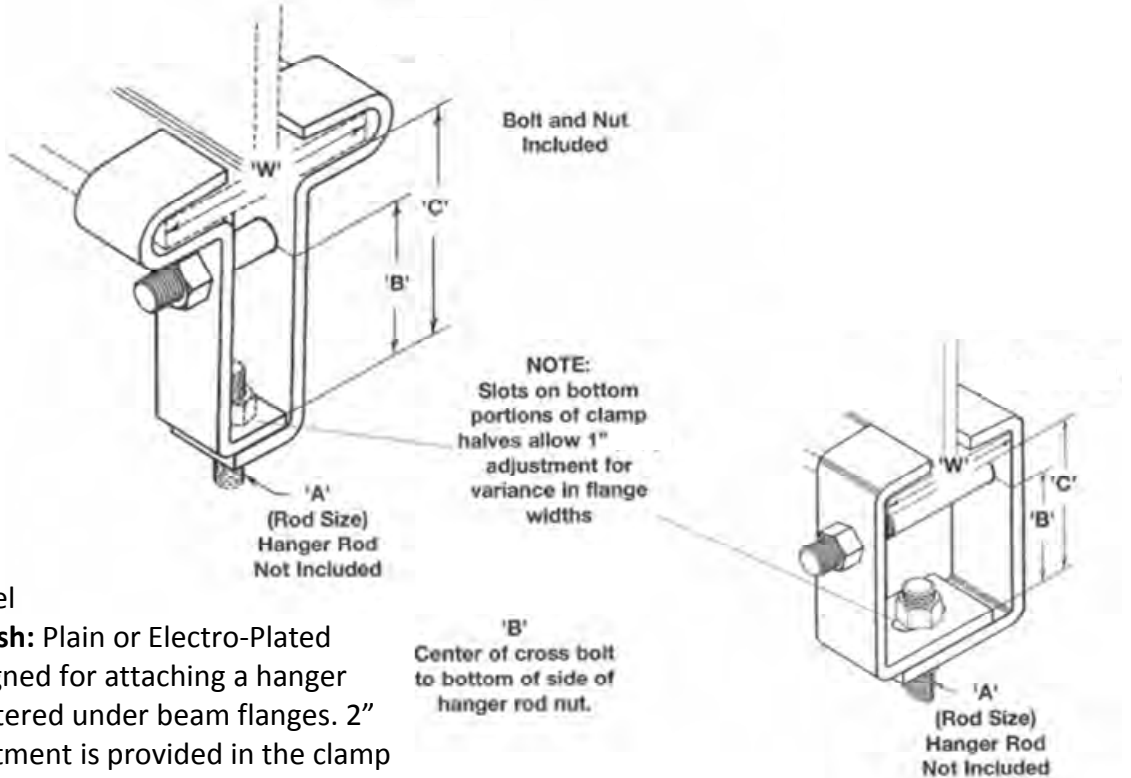
Service: Designed for attaching a hanger rod to the bottom flange of a beam. Adjustable for flange widths of 3" to 7" and a flange thickness of no greater than 5/8"

Ordering: Specify part number and finish

Part Number	"A" Rod Size	Rod Take Out "E" for Beam Flange Width of					Design Load (Lbs.)	Maximum Iron Pipe Size per UL	Wt./C (Lbs.)
		3"	4"	5"	6"	7"			
K3054 - 3/8	3/8" - 16	4 11/16"	4 9/16"	4 5/8"	4"	3 1/8"	730	4"	236
K3054 - 1/2	1/2" - 13	4 13/16"	4 1/2"	4 5/16"	3 15/16"	3 1/4"	1350	8"	254
K3054 - 5/8	5/8" - 11	4 7/8"	4 5/8"	4 3/8"	3 3/4"	3 5/16"	1365	10"	260
K3054 - 3/4	3/4" - 10	5 1/8"	5"	4 5/8"	4 1/4"	3 3/4"	1365	10"	278
K3054 - 7/8	7/8" - 9	5 3/16"	4 7/8"	4 11/16"	4 5/16"	3 3/4"	1365	10"	292



Steel Beam Clamp - K3055



Material: Steel

Standard Finish: Plain or Electro-Plated

Service: Designed for attaching a hanger rod to be centered under beam flanges. 2" vertical adjustment is provided in the clamp

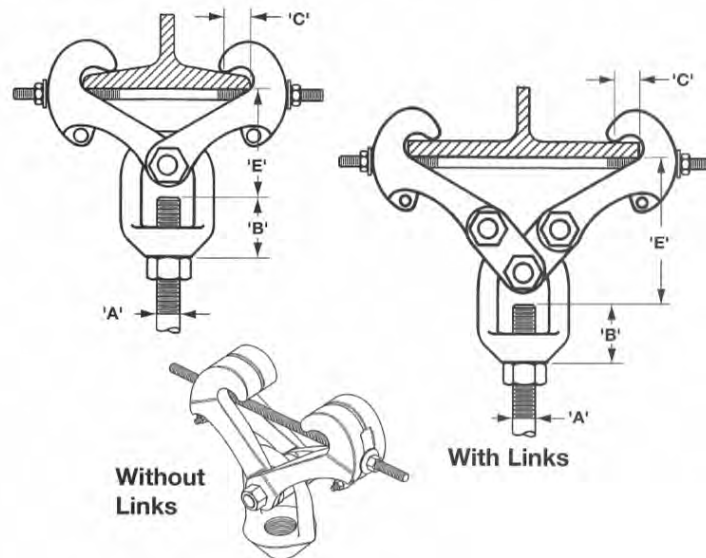
Ordering: Specify part number, flange width and finish

Part Number	Rod Size "A"	"B"	"C"	Design Load (Lbs.)
K3055 - 3/8	3/8" - 16	3"	4"	550
K3055 - 1/2	1/2" - 13	3"	4"	850
K3055 - 5/8	5/8" - 11	3 1/4"	4 1/2"	1100
K3055 - 3/4	3/4" - 10	3 1/4"	4 1/2"	1500
K3055 - 7/8	7/8" - 9	3 1/2"	5"	2600
K3055 - 1	1" - 8	3 1/2"	5 1/2"	4300

Flange Width "W"	Approximate Wt./C For Beam Clamp Size (Lbs.)					
	K3055 - 3/8	K3055 - 1/2	K3055 - 5/8	K3055 - 3/4	K3055 - 7/8	K3055 - 1
4"	168	201	328	434	657	797
5"	181	217	352	466	667	824
6"	193	231	373	495	705	877
7"	205	246	395	525	744	926
8"	214	256	411	546	773	962
10"	235	282	449	596	840	1046
12"	259	311	493	655	918	1143



UFS Beam Clamp w/Weldless Eye Nut - K3291-K3298



Material: Forged Steel

Standard Finish: Plain or Electro-Plated

Service: Designed for attaching a hanger rod to the bottom flange of a beam. Adjustable from flange widths of 3" to 15" and flange thickness of no greater than 1 1/32"

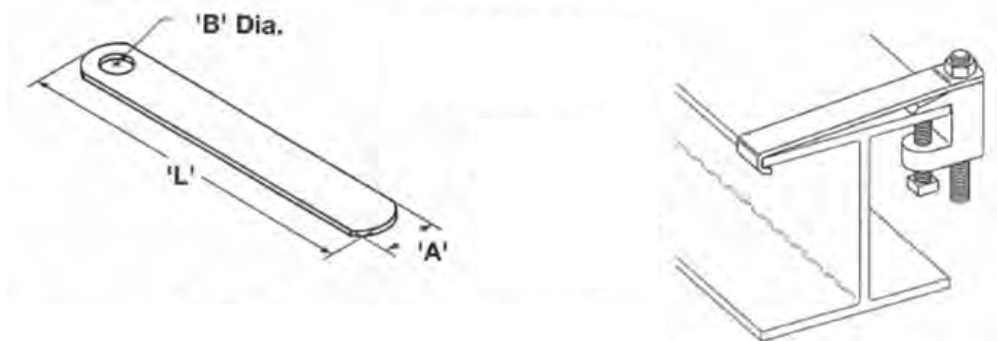
Ordering: Specify part number, rod size and finish

Part Number *Rod Size	Maximum Beam Flange Thickness	Rod Size "A" (Specify) *	"B"	"C"	Design Load (Lbs.)	Wt./C (Lbs.)
K3291 - *	.6"	3/8" - 16; 1/2" - 13; 5/8" - 11; 3/4" - 10	1 1/4"	1 1/8"	3230	390
K3292 - *	.6"	7/8" - 9; 1" - 8	1 11/16"	1 1/8"	5900	915
K3293 - * Δ	.6"	3/8" - 16; 1/2" - 13; 5/8" - 11; 3/4" - 10; 7/8" - 9; 1" - 8	1 11/16"	1 1/8"	5900	1300
K3294 - *	1.031"	7/8" - 9; 1" - 8	1 1/2"	1 1/8"	5900	2165
K3295 - * Δ	1.031"	7/8" - 9; 1" - 8	1 1/2"	1 1/8"	5900	3385
K3296 - *	1.031"	1" - 8; 1 1/8" - 7; 1 1/4" - 7; 1 1/2" - 6	2 1/8"	1 1/8"	11500	2390
K3297 - * Δ	1.031"	1 1/8" - 7; 1 1/4" - 7; 1 1/2" - 6	2 1/8"	1 1/8"	11500	3575
K3298 - *	1.031"	1 3/4" - 5; 2" - 4 1/2	4 9/16"	1 1/8"	11500	3675



Note: Design load for K3291 thru K3295 based on maximum rod size shown. Use the appropriate all threaded rod design load shown on page 187 for sizes less than maximum

Retaining Straps for Top Beams - K3367



Material: Steel

Standard Finish: Pre-Galvanized

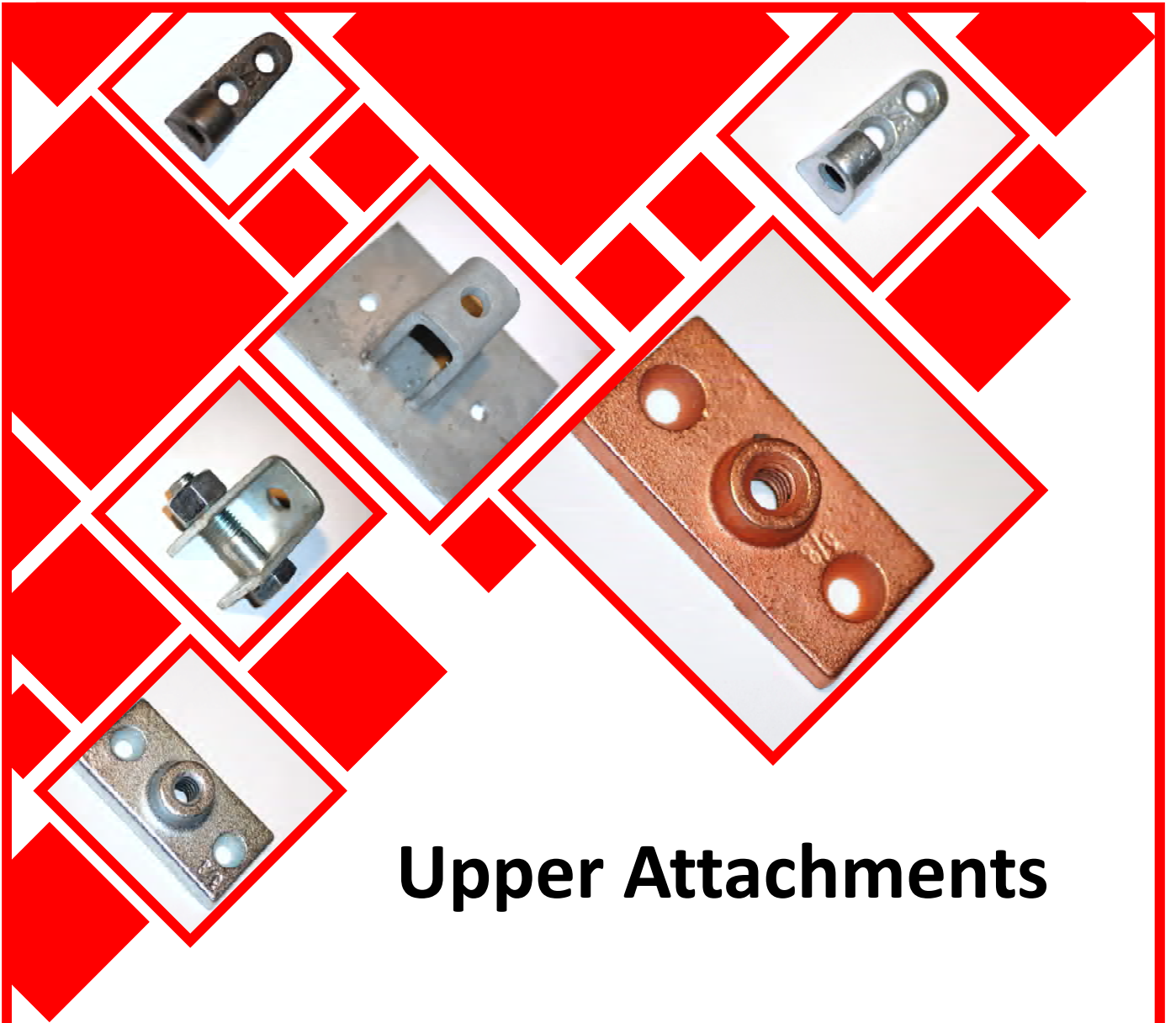
Service: Designed for use with K3031, K3033 and K3034 C-Clamps

Ordering: Specify part number, length "L" (add 2" minimum to flange width) and finish

Part Number	For Use with	"A"	"B"	Wt./C for Length 6" (Lbs.)	Wt./C for Length 8" (Lbs.)	Wt./C for Length 10" (Lbs.)	Wt./C for Length 12" (Lbs.)
K3367 - 3/8	K3033 - 3/8; K3034 - 3/8; K3031 - 3/8	1 1/4"	7/16"	26	35	44	61
K3367 - 1/2	K3033 - 1/2; K3034 - 1/2	1 1/4"	9/16"	25	34	43	60
K3367 - 5/8	K3033 - 5/8; K3034 - 5/8	1 1/4"	11/16"	24	33	42	59
K3367 - 3/4	K3033 - 3/4; K3034 - 3/4	1 1/4"	13/16"	23	32	41	58

Note: Requires field forming on beam





Upper Attachments

Hanger attachments presented in this section are designed to suspend support rods from beams, concrete and other structural surfaces by bolting or welding.

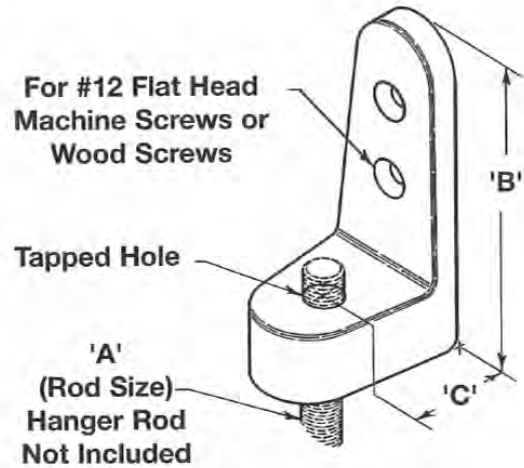
Material: Carbon Steel and Malleable Iron are used in the manufacturing of upper attachments. Stainless Steel and other materials are also available.

Finishes: Finishes for hanger attachments in this section are Plain Steel, Electro-Plated Zinc, Hot Dip Galvanized, Red Primer, Plastic Coating and other special coatings are also available.

Notes: Products in this section are designed and manufactured in accordance with industry standards. RHK is not responsible for injuries and damage which could result from improper and negligent installation of the items.

Side Beam Connector - K3058

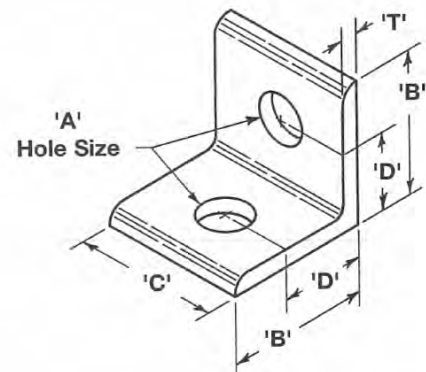
Material: Malleable Iron
Standard Finish: Plain or Electro-Plated
Service: Designed for attaching hanger rod to the side of beams or walls
Weight: Wt./C 12 Lbs.
Ordering: Specify part number and finish



Part Number	Rod Size "A"	"B"	"C"	Design Load (Lbs.)	Wt./C (Lbs.)
K3058 - 3/8	3/8" - 16	2 3/8"	9/16"	250	13
K3058 - 1/2	1/2" - 13	2 3/4"	3/4"	480	25

Side Beam Angle Clip - K3060

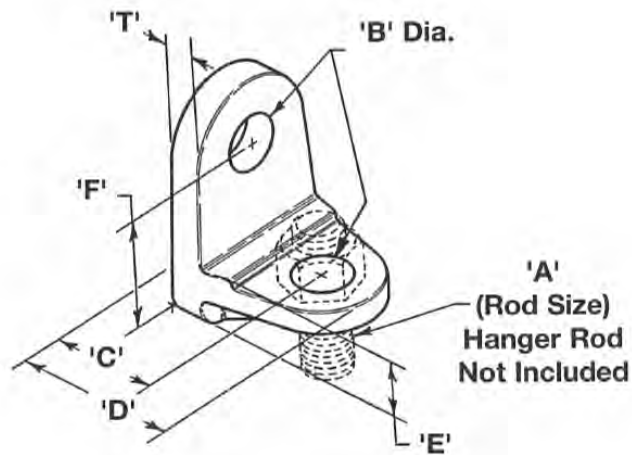
Material: Steel (Stainless Steel available)
Standard Finish: Plain or Electro-Plated
Service: Designed for attaching a hanger rod to the side of beams or walls
Ordering: Specify part number and finish



Part Number	Rod Size	Hole Size "A"	"B"	"C"	"D"	"T"	Design Load (Lbs.)	Wt./C (Lbs.)
K3060 - 3/8	3/8"	7/16"	2 3/16"	2"	1 1/4"	1/4"	305	53
K3060 - 1/2	1/2"	9/16"	2 3/16"	2"	1 1/4"	1/4"	565	51
K3060 - 5/8	5/8"	11/16"	2 3/16"	2"	1 1/4"	1/4"	909	48
K3060 - 3/4	3/4"	13/16"	3"	3"	1 3/4"	3/8"	1355	169
K3060 - 7/8	7/8"	15/16"	4"	4"	2 1/2"	3/8"	1870	312
K3060 - 1	1"	1 1/16"	4"	4"	2 1/2"	1/2"	2480	402



Side Beam Bracket - K3062



Material: Malleable Iron

Standard Finish: Plain or Electro-Plated

Service: Designed for attaching hanger rod to the side of beams or walls

Ordering: Specify part number and finish

Part Number	Rod Size "A"	For Nominal Pipe Sizes	"B"	"C"	"D"	"E"
K3062 - 3/8	3/8" - 16	3/4" to 2"	7/16"	7/8"	1 3/8"	5/8"
K3062 - 1/2	1/2" - 13	2 1/2" to 3 1/2"	9/16"	1 3/16"	1 13/16"	3/4"
K3062 - 5/8	5/8" - 11	4" to 5"	3/4"	1 7/16"	2 3/16"	7/8"
K3062 - 3/4	3/4" - 10	6"	7/8"	1 11/16"	2 9/16"	1"
K3062 - 7/8	7/8" - 9	8" to 12"	1"	2"	3"	1 3/16"

Part Number	"F"	"T"	Design Load with Lag Screw (Lbs.)	Design Load with Bolt to Steel (Lbs.)	Wt./C (Lbs.)
K3062 - 3/8	1 7/16"	1/4"	390	730	21
K3062 - 1/2	1 7/8"	11/32"	640	1350	44
K3062 - 5/8	2 1/8"	7/16"	760	2160	81
K3062 - 3/4	2 1/2"	1/2"	830	3230	146
K3062 - 7/8	3"	19/32"	830	4480	252



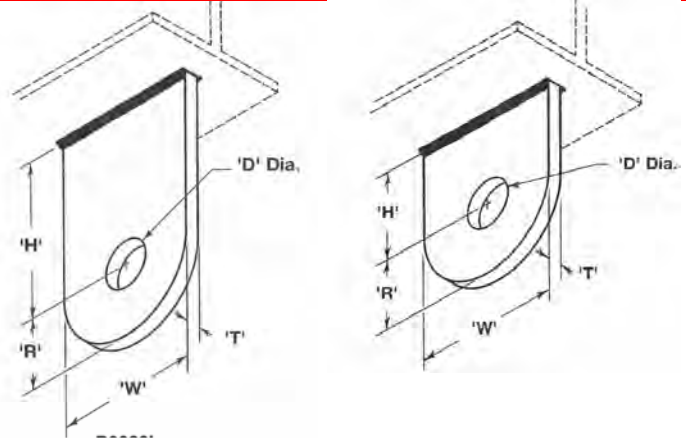
Structural Welding Lug - K3080S & K3080L

Material: Steel

Standard Finish: Plain or Electro-Plated

Service: Designed for attachment to structural steel. Use with K3201 Forged Steel Clevis

Ordering: Specify part number and finish

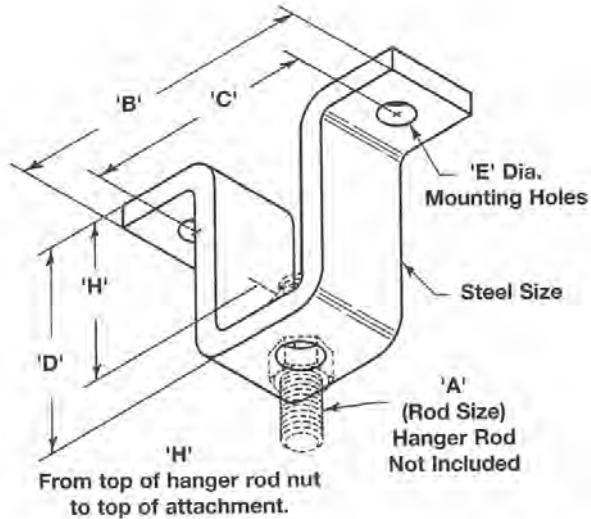


Part Number	For Hanger	Pin or Bolt Size	Hole Diameter "D"	"H"	"R"	"T"	"W"	Design Load (Lbs.)	Wt./C (Lbs.)
K3080S - 1/2	1/2" - 13	5/8"	11/16"	1 1/2"	1 1/4"	1/4"	2 1/2"	1350	44
K3080S - 5/8	5/8" - 11	3/4"	13/16"	1 1/2"	1 1/4"	1/4"	2 1/2"	2160	44
K3080S - 3/4	3/4" - 10	7/8"	15/16"	1 1/2"	1 1/4"	3/8"	2 1/2"	3230	63
K3080S - 7/8	7/8" - 9	1"	1 1/8"	2"	1 1/4"	3/8"	2 1/2"	4480	71
K3080S - 1	1" - 8	1 1/8"	1 1/4"	2"	1 1/2"	1/2"	3"	5900	126
K3080S - 1 1/8	1 1/8" - 7	1 1/4"	1 3/8"	3"	1 1/2"	1/2"	3"	7450	166
K3080S - 1 1/4	1 1/4" - 7	1 3/8"	1 1/2"	3"	2"	5/8"	4"	9500	310
K3080S - 1 1/2	1 1/2" - 6	1 5/8"	1 3/4"	3"	2 1/2"	3/4"	5"	13800	503
K3080S - 1 3/4	1 3/4" - 5	1 7/8"	2"	3"	2 1/2"	3/4"	5"	18600	487
K3080S - 2	2" - 4 1/2	2 1/4"	2 3/8"	4"	3"	3/4"	6"	24600	744

Part Number	For Hanger	Pin or Bolt Size	Hole Diameter "D"	"H"	"R"	"T"	"W"	Design Load (Lbs.)	Wt./C (Lbs.)
K3080L - 1/2	1/2" - 13	5/8"	11/16"	3"	1 1/4"	1/4"	2 1/2"	1350	71
K3080L - 5/8	5/8" - 11	3/4"	13/16"	3"	1 1/4"	1/4"	2 1/2"	2160	68
K3080L - 3/4	3/4" - 10	7/8"	15/16"	3"	1 1/4"	3/8"	2 1/2"	3230	100
K3080L - 7/8	7/8" - 9	1"	1 1/8"	3"	1 1/4"	3/8"	2 1/2"	4480	100
K3080L - 1	1" - 8	1 1/8"	1 1/4"	3"	1 1/2"	1/2"	3"	5900	169
K3080L - 1 1/8	1 1/8" - 7	1 1/4"	1 3/8"	4"	1 1/2"	1/2"	3"	7450	208
K3080L - 1 1/4	1 1/4" - 7	1 3/8"	1 1/2"	4"	2"	5/8"	4"	9500	381
K3080L - 1 1/2	1 1/2" - 6	1 5/8"	1 3/4"	4 1/2"	2 1/2"	3/4"	5"	13800	662
K3080L - 1 3/4	1 3/4" - 5	1 7/8"	2"	4 1/2"	2 1/2"	3/4"	5"	18600	646
K3080L - 2	2" - 4 1/2	2 1/4"	2 3/8"	4 1/2"	3"	3/4"	6"	24600	808



Rod Beam Attachment - K3082



Material: Steel

Standard Finish: Plain or Electro Plated

Service: Designed for attaching hanger rod to ceilings or bottom flange of beam. Allows for vertical adjustment of hanger rod

Ordering: Specify part number and finish

Part Number	Rod Size "A"	"B"	"C"	"D"	Diameter "E"
K3082 - 3/8	3/8" - 16	4"	3 1/8"	3 3/8"	3/8"
K3082 - 1/2	1/2" - 13	5 3/8"	4 1/8"	3 5/8"	1/2"
K3082 - 5/8	5/8" - 11	6"	4 1/2"	3 11/16"	9/16"
K3082 - 3/4	3/4" - 10	6 5/8"	4 3/4"	4 3/4"	11/16"
K3082 - 7/8	7/8" - 9	7"	5"	4 15/16"	13/16"

Part Number	Adjustment "H"	Steel Size	Design Load with Lag Screws (Lbs.)	Design Load with Bolts (Lbs.)	Wt./C (Lbs.)
K3082 - 3/8	2 3/4"	1/4" x 1"	425	730	64
K3082 - 1/2	2 3/4"	3/8" x 1 1/4"	715	1350	136
K3082 - 5/8	2 11/16"	3/8" x 1 1/2"	810	2160	176
K3082 - 3/4	3 1/2"	1/2" x 1 1/2"	1500	3230	269
K3082 - 7/8	3 9/16"	1/2" x 2"	1650	4480	393



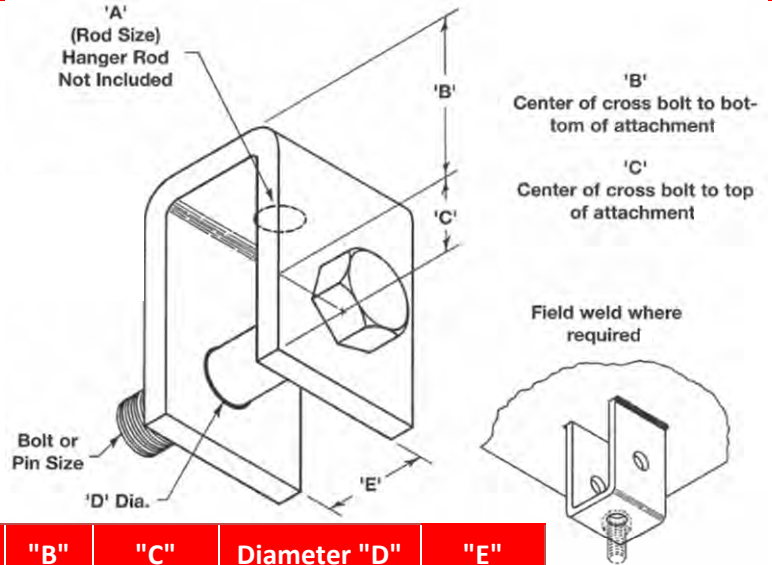
Welded Beam Attachment - K3083

Material: Steel (Stainless Steel available)

Standard Finish: Plain or Electro-Plated

Service: Design for attaching hanger rod to the bottom of structural steel where heavy loads and large hanger rod sizes are required. Can be welded in place in either the upright or inverted position

Ordering: Specify part number (with or without hardware) and finish



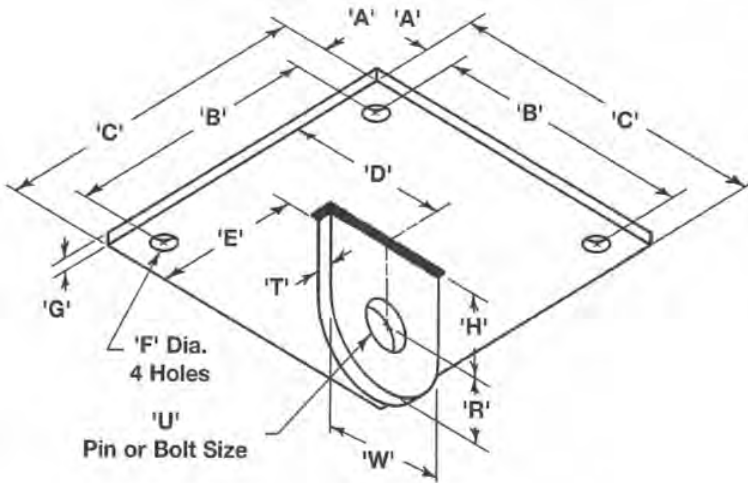
Part Number	Rod Size "A"	Pin or Bolt Size	"B"	"C"	Diameter "D"	"E"
K3083 - 3/8	3/8" - 16	1/2"	2"	7/8"	9/16"	1 1/4"
K3083 - 1/2	1/2" - 13	5/8"	2"	7/8"	11/16"	1 1/4"
K3083 - 5/8	5/8" - 11	3/4"	2"	7/8"	13/16"	1 1/4"
K3083 - 3/4	3/4" - 10	7/8"	2"	1 1/8"	15/16"	1 1/2"
K3083 - 7/8	7/8" - 9	1"	3"	1 1/4"	1 1/8"	2"
K3083 - 1	1" - 8	1 1/8"	3"	1 1/2"	1 1/4"	2"
K3083 - 1 1/8	1 1/8" - 7	1 1/4"	3"	1 1/2"	1 3/8"	2 3/4"
K3083 - 1 1/4	1 1/4" - 7	1 3/8"	3"	2"	1 1/2"	3"
K3083 - 1 1/2	1 1/2" - 6	1 5/8"	4"	2 1/2"	1 3/4"	3 1/2"
K3083 - 1 3/4	1 3/4" - 5	1 7/8"	5"	2 3/4"	2"	3 3/4"
K3083 - 2	2" - 4 1/2	2 1/4"	5"	3 1/4"	2 3/8"	3 3/4"

Part Number	Design Load 650°F (Lbs.)	Design Load 750°F (Lbs.)	Wt./C without Hardware (Lbs.)	Wt./C with Hardware (Lbs.)
K3083 - 3/8	730	572	89	110
K3083 - 1/2	1350	1057	87	123
K3083 - 5/8	2160	1692	84	140
K3083 - 3/4	3230	2530	173	268
K3083 - 7/8	4480	3508	234	376
K3083 - 1	5900	4620	394	596
K3083 - 1 1/8	7450	5830	402	680
K3083 - 1 1/4	9500	7440	734	955
K3083 - 1 1/2	13800	10807	1460	1817
K3083 - 1 3/4	18600	14566	1746	2310
K3083 - 2	24600	19625	2190	2996

Notes: Available without hardware as K3083WO-Size. When ordering with hardware for sizes 3/8" thru 1 1/8", Hex Head Cap Screws and Hex Nuts will be supplied. For 1 1/4" thru 2", Clevis Pin and Cotter Pins will be supplied. Must be specified with or without hardware



Single Lug Concrete Plate - K3084



Material: Steel

Standard Finish: Plain or Electro-Plated

Service: Designed for attachment to concrete ceilings. Use with K3201 Forged Steel Clevis

Ordering: Specify part number and finish

Part Number	For Hanger Rod Size	"A"	"B"	"C"	"D"	"E"	"F"
K3084 - 1/2	1/2" - 13	1"	8"	10"	5"	4 7/8"	9/16"
K3084 - 5/8	5/8" - 11	1"	8"	10"	5"	4 7/8"	9/16"
K3084 - 3/4	3/4" - 10	1"	8"	10"	5"	4 13/16"	11/16"
K3084 - 7/8	7/8" - 9	1"	8"	10"	5"	4 13/16"	11/16"
K3084 - 1	1" - 8	2"	8"	12"	6"	5 3/4"	13/16"
K3084 - 1 1/8	1 1/8" - 7	2"	8"	12"	6"	5 3/4"	15/16"
K3084 - 1 1/4	1 1/4" - 7	2"	8"	12"	6"	5 11/16"	15/16"
K3084 - 1 1/2	1 1/2" - 6	2"	8"	12"	6"	5 5/8"	1 1/8"

Part Number	"G"	"H"	"R"	Bolt or Pin Size "U"	"T" x "W"	Design Load (Lbs.)	Wt./C (Lbs.)
K3084 - 1/2	3/8"	1 1/2"	1 1/4"	5/8"	1/4" x 2"	1350	1096
K3084 - 5/8	1/2"	1 1/2"	1 1/4"	3/4"	1/4" x 2"	2160	1447
K3084 - 3/4	1/2"	1 1/2"	1 1/4"	7/8"	3/8" x 2 1/2"	3230	1459
K3084 - 7/8	1/2"	2"	1 1/4"	1"	3/8" x 2 1/2"	4480	2166
K3084 - 1	3/4"	2"	1 1/2"	1 1/8"	1/2" x 3"	5900	3145
K3084 - 1 1/8	3/4"	3"	1 1/2"	1 1/4"	1/2" x 3"	7450	3170
K3084 - 1 1/4	3/4"	3"	2"	1 3/8"	5/8" x 4"	9500	4312
K3084 - 1 1/2	1"	3"	2 1/2"	1 5/8"	3/4" x 5"	13800	4470

Notes: Design Load is based off rod sizes. Before installation ensure that concrete and anchorage are sufficient to carry the load



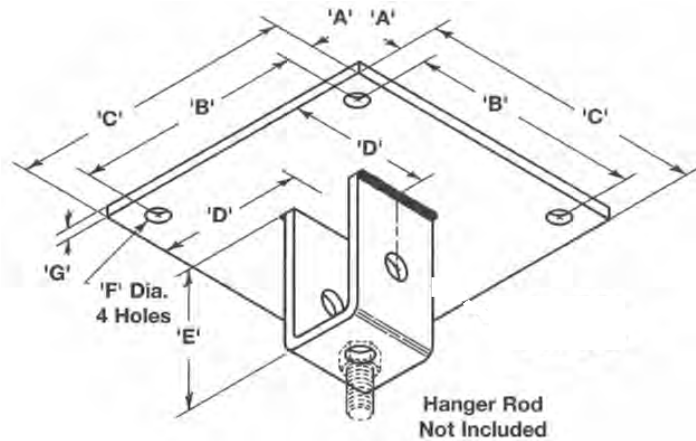
Rod Attachment Concrete Plate - K3085

Material: Steel

Standard Finish: Plain or Electro-Plated

Service: Designed for attachment to concrete ceilings. Allows for vertical adjustment of hanger rod

Ordering: Specify part number and finish



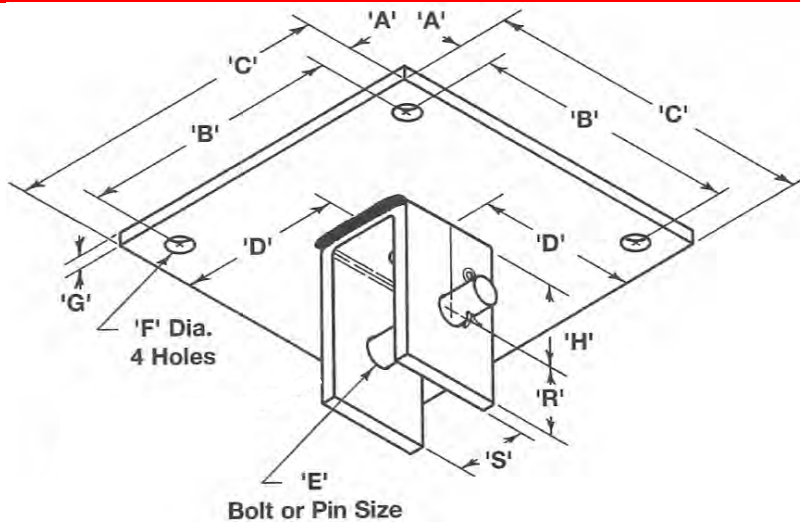
Part Number	Rod Size	"A"	"B"	"C"	"D"
K3085 - 3/8	3/8" - 16	1"	8"	10"	5"
K3085 - 1/2	1/2" - 13	1"	8"	10"	5"
K3085 - 5/8	5/8" - 11	1"	8"	10"	5"
K3085 - 3/4	3/4" - 10	1"	8"	10"	5"
K3085 - 7/8	7/8" - 9	1"	8"	10"	5"
K3085 - 1	1" - 8	2"	8"	12"	6"
K3085 - 1 1/8	1 1/8" - 7	2"	8"	12"	6"
K3085 - 1 1/4	1 1/4" - 7	2"	8"	12"	6"
K3085 - 1 1/2	1 1/2" - 6	2"	8"	12"	6"

Part Number	"E"	"F"	"G"	Design Load (Lbs.)	Wt./C (Lbs.)
K3085 - 3/8	2 7/8"	9/16"	3/8"	730	1145
K3085 - 1/2	2 7/8"	9/16"	3/8"	1350	1143
K3085 - 5/8	2 7/8"	9/16"	1/2"	2160	1490
K3085 - 3/4	3 1/8"	11/16"	1/2"	3230	1574
K3085 - 7/8	4 1/4"	11/16"	1/2"	4480	1635
K3085 - 1	4 1/2"	13/16"	3/4"	5900	3420
K3085 - 1 1/8	4 3/4"	15/16"	3/4"	7450	3413
K3085 - 1 1/4	5"	15/16"	3/4"	9500	3747
K3085 - 1 1/2	6 1/2"	1 1/8"	1"	13800	5438

Notes: Design Load is based off rod sizes. Before installation ensure that concrete and anchorage are sufficient to carry the load



Clevis Concrete Plate - K3086



Material: Steel

Standard Finish: Plain or Electro-Plated

Service: Designed for attachment to concrete ceilings. Use with K3210 or K3211 Welded Eye Rod or K3200 Weldless Eye Nut

Ordering: Specify part number and finish

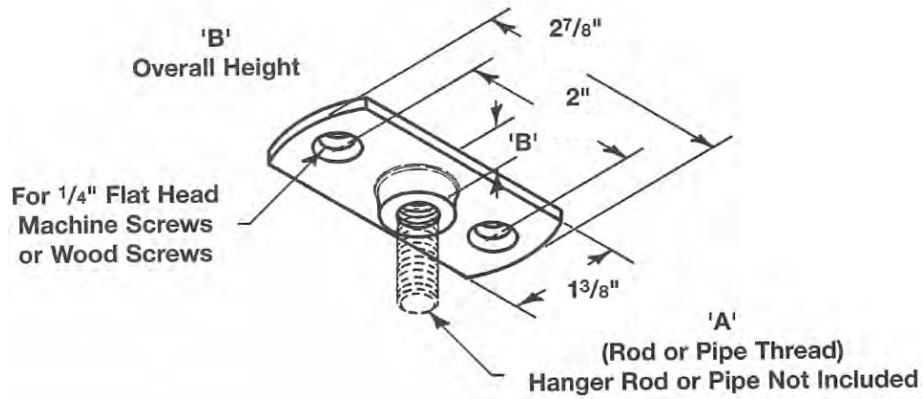
Part Number	For Hanger Rod Size	"A"	"B"	"C"	"D"	Bolt or Pin Size "E"
K3086 - 3/8	3/8" - 16	1"	8"	10"	5"	1/2"
K3086 - 1/2	1/2" - 13	1"	8"	10"	5"	5/8"
K3086 - 5/8	5/8" - 11	1"	8"	10"	5"	3/4"
K3086 - 3/4	3/4" - 10	1"	8"	10"	5"	7/8"
K3086 - 7/8	7/8" - 9	1"	8"	10"	5"	1"
K3086 - 1	1" - 8	2"	8"	12"	6"	1 1/8"
K3086 - 1 1/8	1 1/8" - 7	2"	8"	12"	6"	1 1/4"
K3086 - 1 1/4	1 1/4" - 7	2"	8"	12"	6"	1 3/8"
K3086 - 1 1/2	1 1/2" - 6	2"	8"	12"	6"	1 5/8"

Part Number	"F"	"G"	"H"	"R"	"S"	Design Load (Lbs.)	Wt./C (Lbs.)
K3086 - 3/8	9/16"	3/8"	2"	7/8"	1 1/4"	730	1165
K3086 - 1/2	9/16"	3/8"	2"	7/8"	1 1/4"	1350	1178
K3086 - 5/8	9/16"	1/2"	2"	7/8"	1 1/4"	2160	1546
K3086 - 3/4	11/16"	1/2"	2"	1 1/8"	1 1/2"	3230	1673
K3086 - 7/8	11/16"	1/2"	3"	1 1/4"	2"	4480	1783
K3086 - 1	13/16"	3/4"	3"	1 1/2"	2"	5900	3636
K3086 - 1 1/8	15/16"	3/4"	3"	1 3/4"	2 3/4"	7450	3708
K3086 - 1 1/4	15/16"	3/4"	3"	2"	3"	9500	3986
K3086 - 1 1/2	1 1/8"	1"	4"	2 1/2"	3 1/2"	13800	5816

Notes: Hardware for sizes 3/8" thru 1 1/8" Hex Head Cap Screws and Hex Nuts will be supplied. For 1 1/4" and 1 1/2" sizes, Clevis Pin and Cotter Pins will be supplied. Design Load is based off rod sizes. Before installation ensure that concrete and anchorage are sufficient to carry the load



Ceiling Flange - K3199



Material: Malleable Iron (Stainless Steel type 304 available)
Standard Finish: Plain, Electro-Plated or Copper Plated
Service: Designed for attaching a hanger or support rod to beams, ceilings or walls
Ordering: Specify part number and finish



Part Number (Plain - R / Dura-Copper - CT)	Thread Size "A" Rod	"B"	Design Load (Lbs.)	Wt./C (Lbs.)
K3199_ - 3/8	3/8" - 16	7/16"	180	13
K3199_ - 1/2	1/2" - 13	1/2"	180	17

