

Concrete Inserts

Concrete inserts presented in this section are designed to provide a pre-set support point in concrete ceilings, walls, and floors. A variety of inserts with different design loads are available.

Materials: Carbon Steel and Malleable Iron are used in the manufacturing of concrete inserts. Stainless Steel and other materials are also available.

Finishes: Finishes for concrete inserts in this section are Plain Steel, Electro-Plated Zinc, Hot Dipped Galvanized, Red Primer and other special coatings are also available.

Notes: Products in this section are designed and manufactured in accordance with industry standards. RHK is not responsible for injuries and damage which could result from improper and negligent installation of the items.

Light Duty Spot Insert - K2500

Material: Steel

Standard Finish: Plain or Electro-Plated

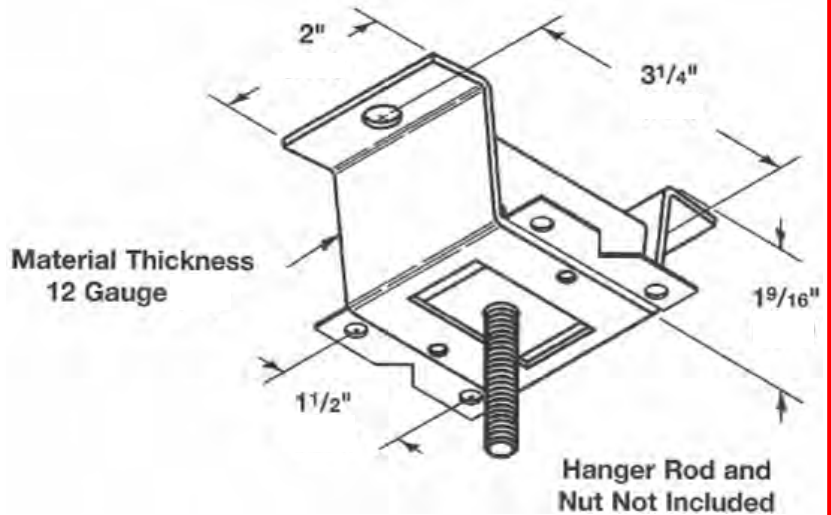
Service: Designed to be embedded in concrete to attach 1/4"-20 to 7/8"-9 hanger rods

How to Install: Attach concrete insert to forms and install reinforcing rods as required. After forms are dismantled, the knockout can be removed from the insert. The K2500 Insert Nut can be installed and the rod fastened to the nut. The rod should touch the inside top of the insert but should not be forced further to avoid damaging the insert

Ordering: Specify part number and finish (Order N2500 nuts separately)

Weight: Wt./C 46 Lbs.

Design Load: Loading based on a straight pull of 600 Lbs.



Note: Before installation ensure that concrete is sufficient to carry the load

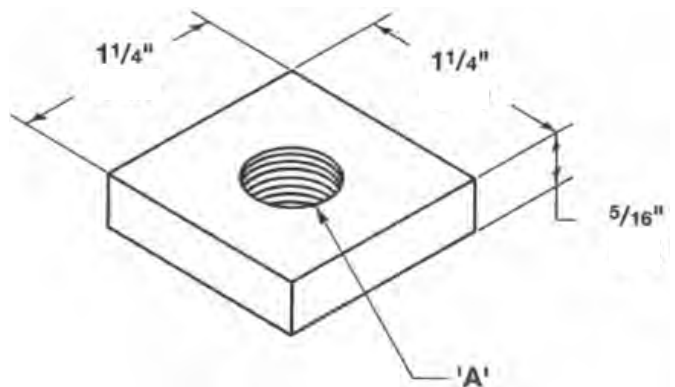
Steel Insert Nut - N2500

Material: Steel

Standard Finish: Plain or Electro-Plated

Service: Designed for use with K2500 Spot Insert

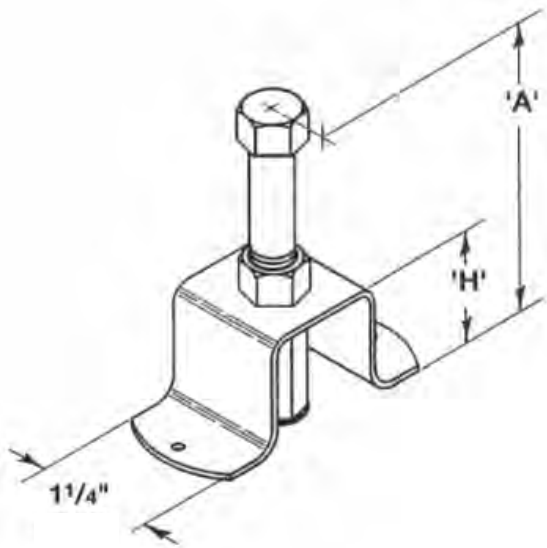
Ordering: Specify part number and finish



Part Number	Tap Size "A"	Wt./C (Lbs.)
N2500 - 1/4	1/4" - 20	14
N2500 - 3/8	3/8" - 16	13
N2500 - 1/2	1/2" - 13	12
N2500 - 5/8	5/8" - 11	11
N2500 - 3/4	3/4" - 10	11
N2500 - 7/8	7/8" - 9	10



Light Duty Spot Insert - K2501



Material: Steel

Standard Finish: Plain or Electro-Plated

Service: Designed to be embedded in concrete for attachment of 1/4"-20 to 1/2"-13 hanger rods

Ordering: Specify part number, size and finish

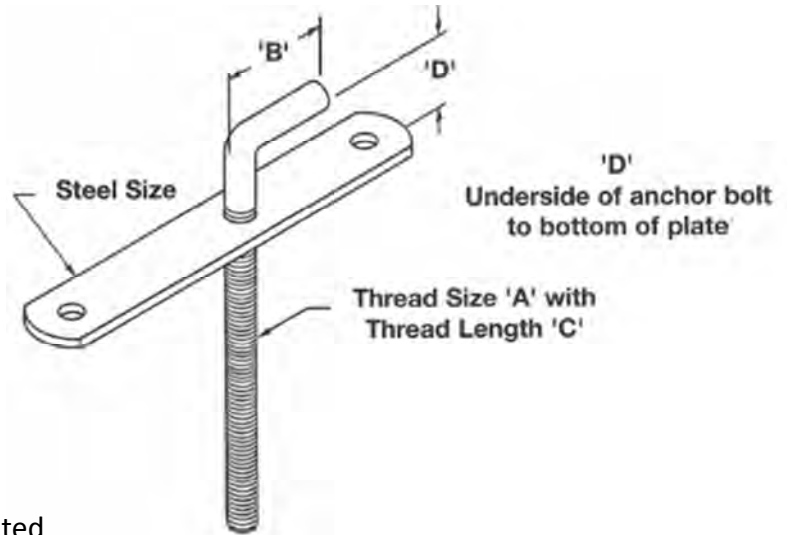
How to Install: Locate and nail to form. Pour concrete and strip forms when set. Remove color coded plug, install rod and lock with jam nut

Part Number	Rod Size	"A"	"H"	Design Load (Lbs.)	Wt./C (Lbs.)
K2501 - 1/4	1/4" - 20	2 7/16"	7/8"	250	16
K2501 - 3/8	3/8" - 16	3 1/16"	1 7/8"	730	22
K2501 - 1/2	1/2" - 13	4 1/8"	1 7/8"	1350	26

Note: Design load is based off of rod sizes. Before installation ensure that concrete is sufficient to carry load



Adjustable Metal Deck Ceiling Bolt - K3019

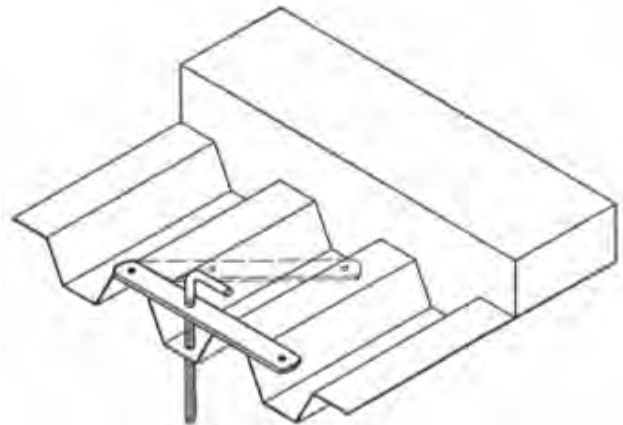


Material: Steel

Standard Finish: Plain or Electro-Plated

Service: Designed for installation in metal deck forms for attachment of hanger rod

Ordering: Specify part number and finish



Part Number	Thread Size "A"	"B"	Thread Length "C"	"D"	Steel Size	Design Load (Lbs.)	Wt./C (Lbs.)
K3019 - 3/8	3/8" - 16	2 1/2"	6 3/8"	1 1/4"	7 Ga. x 1 1/4" x 10"	730	80
K3019 - 1/2	1/2" - 13	2 1/2"	6 1/2"	1 1/4"	7 Ga. x 1 1/4" x 10"	1350	99
K3019 - 5/8	5/8" - 11	2 1/2"	6 3/4"	1 1/4"	7 Ga. x 1 1/4" x 10"	2160	129
K3019 - 3/4	3/4" - 10	2 1/2"	6 3/16"	2 1/4"	1/4" x 3" x 10"	3230	238

Note: Design load is based off of rod sizes. Before installation ensure that concrete is sufficient to carry the load

